

For 21. Shreevasth Enterprises Pvt. Ltd. 22. Pannalal Shree Pvt. Ltd. 23. Shreevasth Enterprises Pvt. Ltd. 24. Shreevasth Enterprises Pvt. Ltd. 25. Shreevasth Enterprises Pvt. Ltd. 26. Shreevasth Enterprises Pvt. Ltd. 27. Shreevasth Enterprises Pvt. Ltd. 28. Shreevasth Enterprises Pvt. Ltd. 29. Shreevasth Enterprises Pvt. Ltd. 30. Shreevasth Enterprises Pvt. Ltd. 31. Shreevasth Enterprises Pvt. Ltd. 32. Shreevasth Enterprises Pvt. Ltd. 33. Shreevasth Enterprises Pvt. Ltd. 34. Shreevasth Enterprises Pvt. Ltd. 35. Shreevasth Enterprises Pvt. Ltd. 36. Shreevasth Enterprises Pvt. Ltd. 37. Shreevasth Enterprises Pvt. Ltd. 38. Shreevasth Enterprises Pvt. Ltd. 39. Shreevasth Enterprises Pvt. Ltd. 40. Shreevasth Enterprises Pvt. Ltd. 41. Shreevasth Enterprises Pvt. Ltd. 42. Shreevasth Enterprises Pvt. Ltd. 43. Shreevasth Enterprises Pvt. Ltd. 44. Shreevasth Enterprises Pvt. Ltd. 45. Shreevasth Enterprises Pvt. Ltd. 46. Shreevasth Enterprises Pvt. Ltd. 47. Shreevasth Enterprises Pvt. Ltd. 48. Shreevasth Enterprises Pvt. Ltd. 49. Shreevasth Enterprises Pvt. Ltd. 50. Shreevasth Enterprises Pvt. Ltd. 51. Shreevasth Enterprises Pvt. Ltd. 52. Shreevasth Enterprises Pvt. Ltd. 53. Shreevasth Enterprises Pvt. Ltd. 54. Shreevasth Enterprises Pvt. Ltd. 55. Shreevasth Enterprises Pvt. Ltd. 56. Shreevasth Enterprises Pvt. Ltd. 57. Shreevasth Enterprises Pvt. Ltd. 58. Shreevasth Enterprises Pvt. Ltd. 59. Shreevasth Enterprises Pvt. Ltd. 60. Shreevasth Enterprises Pvt. Ltd. 61. Shreevasth Enterprises Pvt. Ltd. 62. Shreevasth Enterprises Pvt. Ltd. 63. Shreevasth Enterprises Pvt. Ltd. 64. Shreevasth Enterprises Pvt. Ltd. 65. Shreevasth Enterprises Pvt. Ltd. 66. Shreevasth Enterprises Pvt. Ltd. 67. Shreevasth Enterprises Pvt. Ltd. 68. Shreevasth Enterprises Pvt. Ltd. 69. Shreevasth Enterprises Pvt. Ltd. 70. Shreevasth Enterprises Pvt. Ltd. 71. Shreevasth Enterprises Pvt. Ltd. 72. Shreevasth Enterprises Pvt. Ltd. 73. Shreevasth Enterprises Pvt. Ltd. 74. Shreevasth Enterprises Pvt. Ltd. 75. Shreevasth Enterprises Pvt. Ltd.

By their Constituted Attorney
(Constituted Attorney)
By their Constituted Attorney
(Constituted Attorney)
By their Constituted Attorney
(Constituted Attorney)
By their Constituted Attorney
(Constituted Attorney)
By their Constituted Attorney
(Constituted Attorney)
By their Constituted Attorney
(Constituted Attorney)

By their Constituted Attorney
(Constituted Attorney)
By their Constituted Attorney
(Constituted Attorney)
By their Constituted Attorney
(Constituted Attorney)
By their Constituted Attorney
(Constituted Attorney)
By their Constituted Attorney
(Constituted Attorney)
By their Constituted Attorney
(Constituted Attorney)
By their Constituted Attorney
(Constituted Attorney)
By their Constituted Attorney
(Constituted Attorney)

By their Constituted Attorney
(Constituted Attorney)
By their Constituted Attorney
(Constituted Attorney)
By their Constituted Attorney
(Constituted Attorney)
By their Constituted Attorney
(Constituted Attorney)
By their Constituted Attorney
(Constituted Attorney)
By their Constituted Attorney
(Constituted Attorney)
By their Constituted Attorney
(Constituted Attorney)
By their Constituted Attorney
(Constituted Attorney)

By their Constituted Attorney
(Constituted Attorney)
By their Constituted Attorney
(Constituted Attorney)
By their Constituted Attorney
(Constituted Attorney)
By their Constituted Attorney
(Constituted Attorney)
By their Constituted Attorney
(Constituted Attorney)
By their Constituted Attorney
(Constituted Attorney)
By their Constituted Attorney
(Constituted Attorney)
By their Constituted Attorney
(Constituted Attorney)

By their Constituted Attorney
(Constituted Attorney)
By their Constituted Attorney
(Constituted Attorney)
By their Constituted Attorney
(Constituted Attorney)
By their Constituted Attorney
(Constituted Attorney)
By their Constituted Attorney
(Constituted Attorney)
By their Constituted Attorney
(Constituted Attorney)
By their Constituted Attorney
(Constituted Attorney)
By their Constituted Attorney
(Constituted Attorney)

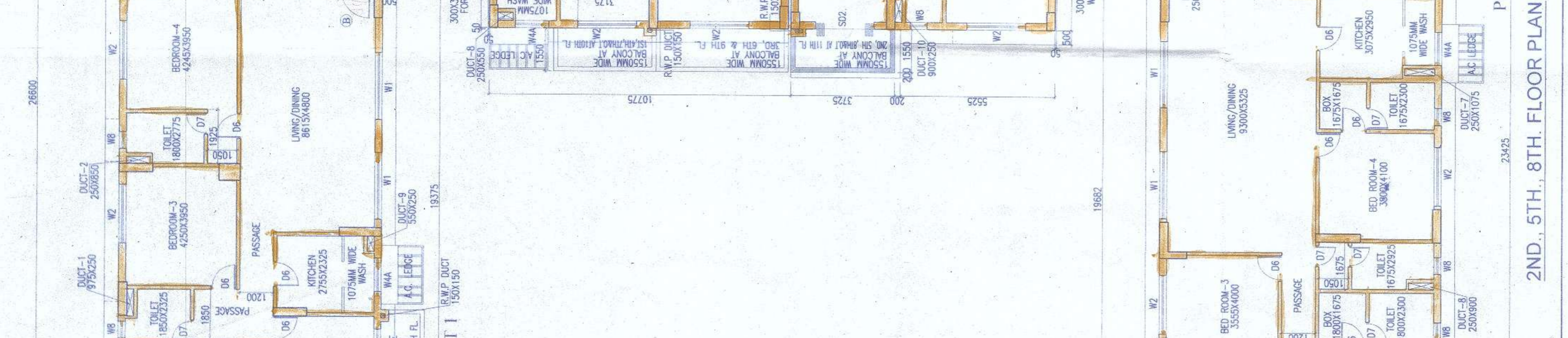
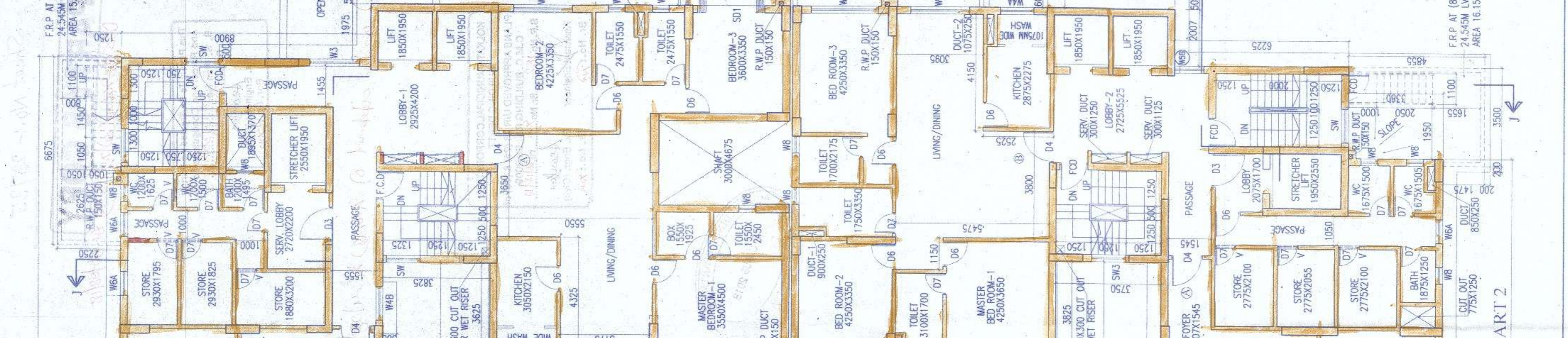
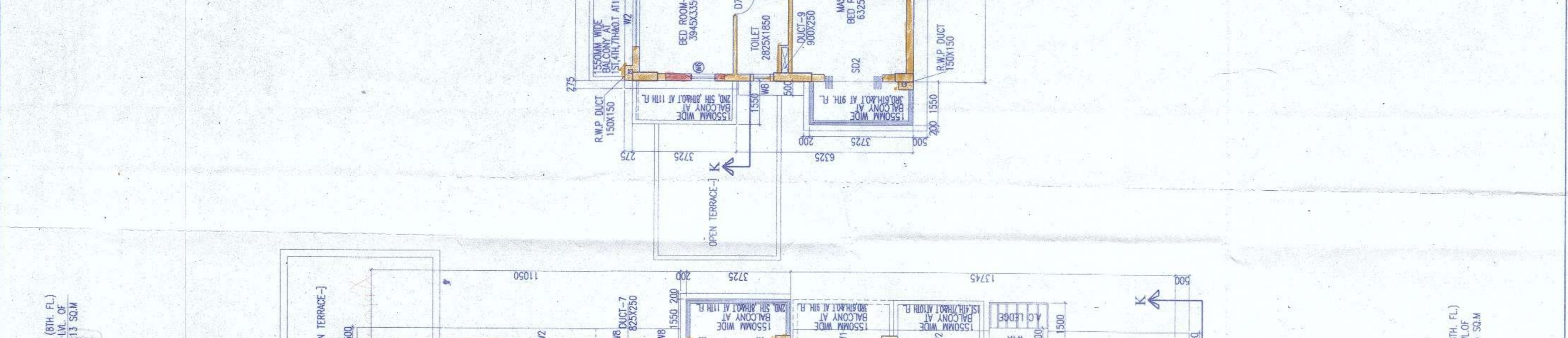
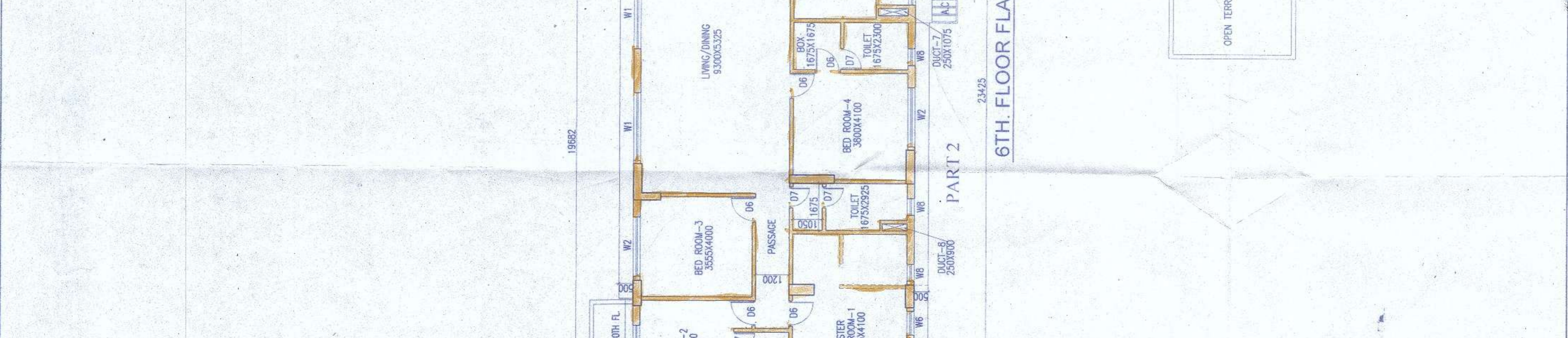
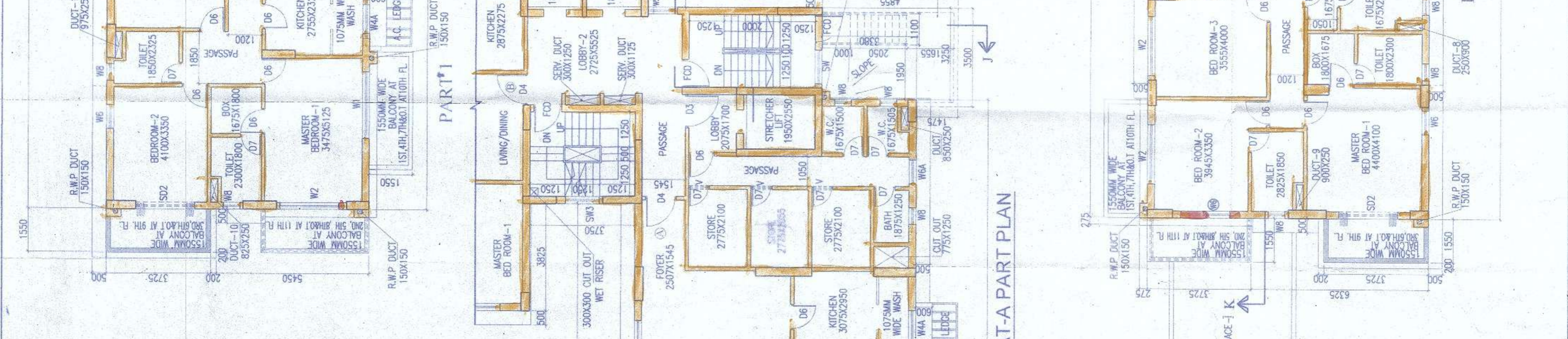
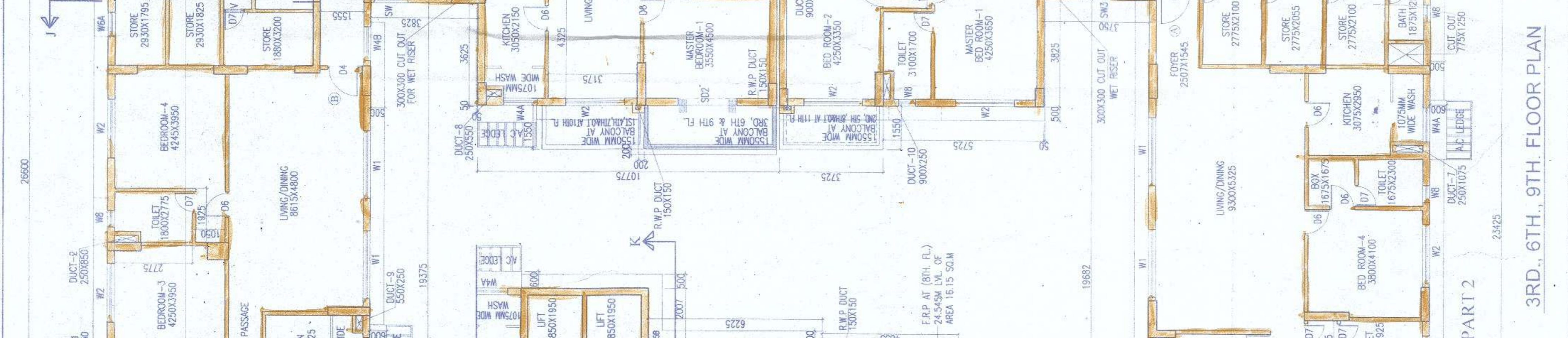
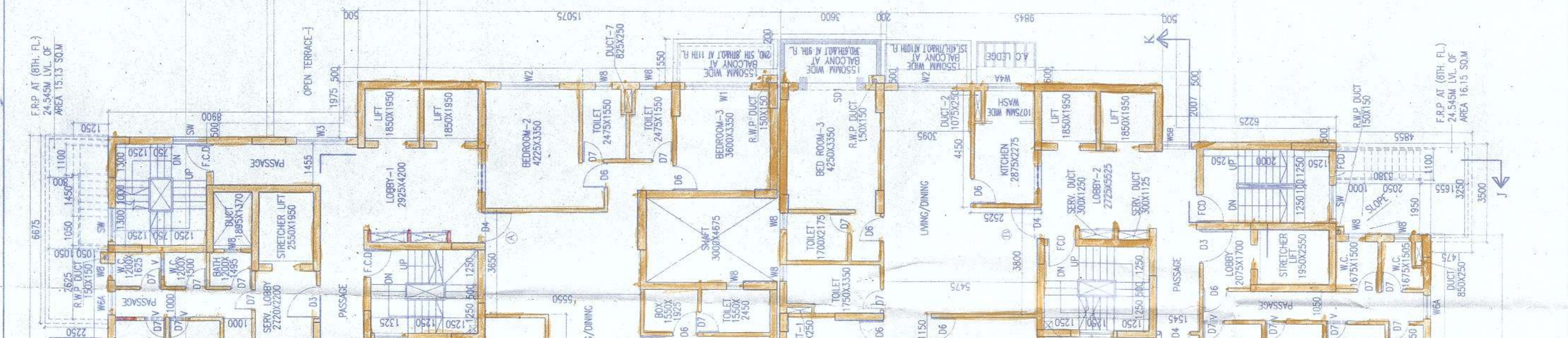
By their Constituted Attorney
(Constituted Attorney)
By their Constituted Attorney
(Constituted Attorney)
By their Constituted Attorney
(Constituted Attorney)
By their Constituted Attorney
(Constituted Attorney)
By their Constituted Attorney
(Constituted Attorney)
By their Constituted Attorney
(Constituted Attorney)
By their Constituted Attorney
(Constituted Attorney)
By their Constituted Attorney
(Constituted Attorney)

By their Constituted Attorney
(Constituted Attorney)
By their Constituted Attorney
(Constituted Attorney)
By their Constituted Attorney
(Constituted Attorney)
By their Constituted Attorney
(Constituted Attorney)
By their Constituted Attorney
(Constituted Attorney)
By their Constituted Attorney
(Constituted Attorney)
By their Constituted Attorney
(Constituted Attorney)
By their Constituted Attorney
(Constituted Attorney)

By their Constituted Attorney
(Constituted Attorney)
By their Constituted Attorney
(Constituted Attorney)
By their Constituted Attorney
(Constituted Attorney)
By their Constituted Attorney
(Constituted Attorney)
By their Constituted Attorney
(Constituted Attorney)
By their Constituted Attorney
(Constituted Attorney)
By their Constituted Attorney
(Constituted Attorney)
By their Constituted Attorney
(Constituted Attorney)

SCHEDULE OF DOOR & WINDOW

NO.	SILL	LINTEL	SIZE
DW1	2450	2450	3450X2450
DW2	2450	2450	4920X2450
DW3	2450	2450	5300X2450
DW4	2450	2450	4995X2450
DW5	2450	2450	3800X2450
DW6	2450	2450	3195X2450
DW7	2450	2450	3300X2450
DW8	2450	2450	3600X2450
DW9	2450	2450	3600X2450
DW10	2450	2450	1800X2450
DW11	2450	2450	1800X2450
DW12	2450	2450	1800X2450
DW13	2450	2450	1800X2450
DW14	2450	2450	1800X2450
DW15	2450	2450	1800X2450
DW16	2450	2450	1800X2450
DW17	2450	2450	1800X2450
DW18	2450	2450	1800X2450
DW19	2450	2450	1800X2450
DW20	2450	2450	1800X2450
DW21	2450	2450	1800X2450
DW22	2450	2450	1800X2450
DW23	2450	2450	1800X2450
DW24	2450	2450	1800X2450
DW25	2450	2450	1800X2450
DW26	2450	2450	1800X2450
DW27	2450	2450	1800X2450
DW28	2450	2450	1800X2450
DW29	2450	2450	1800X2450
DW30	2450	2450	1800X2450
DW31	2450	2450	1800X2450
DW32	2450	2450	1800X2450
DW33	2450	2450	1800X2450
DW34	2450	2450	1800X2450
DW35	2450	2450	1800X2450
DW36	2450	2450	1800X2450
DW37	2450	2450	1800X2450
DW38	2450	2450	1800X2450
DW39	2450	2450	1800X2450
DW40	2450	2450	1800X2450
DW41	2450	2450	1800X2450
DW42	2450	2450	1800X2450
DW43	2450	2450	1800X2450
DW44	2450	2450	1800X2450
DW45	2450	2450	1800X2450
DW46	2450	2450	1800X2450
DW47	2450	2450	1800X2450
DW48	2450	2450	1800X2450
DW49	2450	2450	1800X2450
DW50	2450	2450	1800X2450
DW51	2450	2450	1800X2450
DW52	2450	2450	1800X2450
DW53	2450	2450	1800X2450
DW54	2450	2450	1800X2450
DW55	2450	2450	1800X2450
DW56	2450	2450	1800X2450
DW57	2450	2450	1800X2450
DW58	2450	2450	1800X2450
DW59	2450	2450	1800X2450
DW60	2450	2450	1800X2450
DW61	2450	2450	1800X2450
DW62	2450	2450	1800X2450
DW63	2450	2450	1800X2450
DW64	2450	2450	1800X2450
DW65	2450	2450	1800X2450
DW66	2450	2450	1800X2450
DW67	2450	2450	1800X2450
DW68	2450	2450	1800X2450
DW69	2450	2450	1800X2450
DW70	2450	2450	1800X2450
DW71	2450	2450	1800X2450
DW72	2450	2450	1800X2450
DW73	2450	2450	1800X2450
DW74	2450	2450	1800X2450
DW75	2450	2450	1800X2450
DW76	2450	2450	1800X2450
DW77	2450	2450	1800X2450
DW78	2450	2450	1800X2450
DW79	2450	2450	1800X2450
DW80	2450	2450	1800X2450
DW81	2450	2450	1800X2450
DW82	2450	2450	1800X2450
DW83	2450	2450	1800X2450
DW84	2450	2450	1800X2450
DW85	2450	2450	1800X2450
DW86	2450	2450	1800X2450
DW87	2450	2450	1800X2450
DW88	2450	2450	1800X2450
DW89	2450	2450	1800X2450
DW90	2450	2450	1800X2450
DW91	2450	2450	1800X2450
DW92	2450	2450	1800X2450
DW93	2450	2450	1800X2450
DW94	2450	2450	1800X2450
DW95	2450	2450	1800X2450
DW96	2450	2450	1800X2450
DW97	2450	2450	1800X2450
DW98	2450	2450	1800X2450
DW99	2450	2450	1800X2450
DW100	2450	2450	1800X2450



AGRAWAL & AGRAWAL
BARODA
DATE: 05.07.18
SCALE: 1:100
SHEET NO.: 20/23
BLOCK: 5 (PART 1 & 2)
PROJECT: PLAN SHOWING CHANGES FOR 20/23 OF SMC (R) BUILDING RULE-2009 OF RESIDENTIAL COMPLEX WITH BLOCK-1 (G+N) BLOCK-2 TO 4 (B-G) AND BLOCKS (B-G-N) AT PREMISES NO. 49, MONOHAN BANERJEE ROAD, KOLKATA-700 098
BY THEIR CONSTITUTED ATTORNEY
JAY PRAKASH BHARAT KUMAR AGRAWAL
B. Arch., A.I.A.
REGISTERED ARCHITECT (No. 3294)
SIGNATURE OF ARCHITECT
CERTIFICATE OF ARCHITECT
I DO HEREBY CERTIFY WITH FULL RESPONSIBILITY THAT THE BUILDING PLAN HAS BEEN DRAWN UP AS PER K.M.C. THAT THE WIDTH OF THE ABUTTING ROAD CONFORMS WITH THE PLAN AND IT IS A BUILDABLE SITE NOT A TANK OR A FILLED UP TANK. THE SITE PLAN KEY PLAN AGREES WITH THE LAYOUT IS DEMARCATED BY BOUNDARY WALLS. MASS TRANSPARENT AS SHOWN FULLY OCCUPIED BY THE OWNERS AS PER OWNERS UNDERTAKING.

Sheet No. 1-29/35

PARTY'S COPY

008/19-24 (29) 118-19 84-84/8/18

This Plan is to be Treated As Part
And Parcel And Complies To
B. S. Plan No. 29/35/18/2
Dated 23.11.17
Ex. Engineer (C.B)
Br. No. 1729

Approved as per approval of 8.10.18 at 24/10/18.

KOLKATA MUNICIPAL CORPORATION
BUILDING DEPTT.
PLANS APPROVED U/R 26 (2a) & (2b) of
C.M.C. BUILDING RULES 2009
B.P. No. 1729 Br. No. 1729
Asstt. Engineer Ex. Engr. (C/M)
Br. No. 1729 Br. No. 1729

